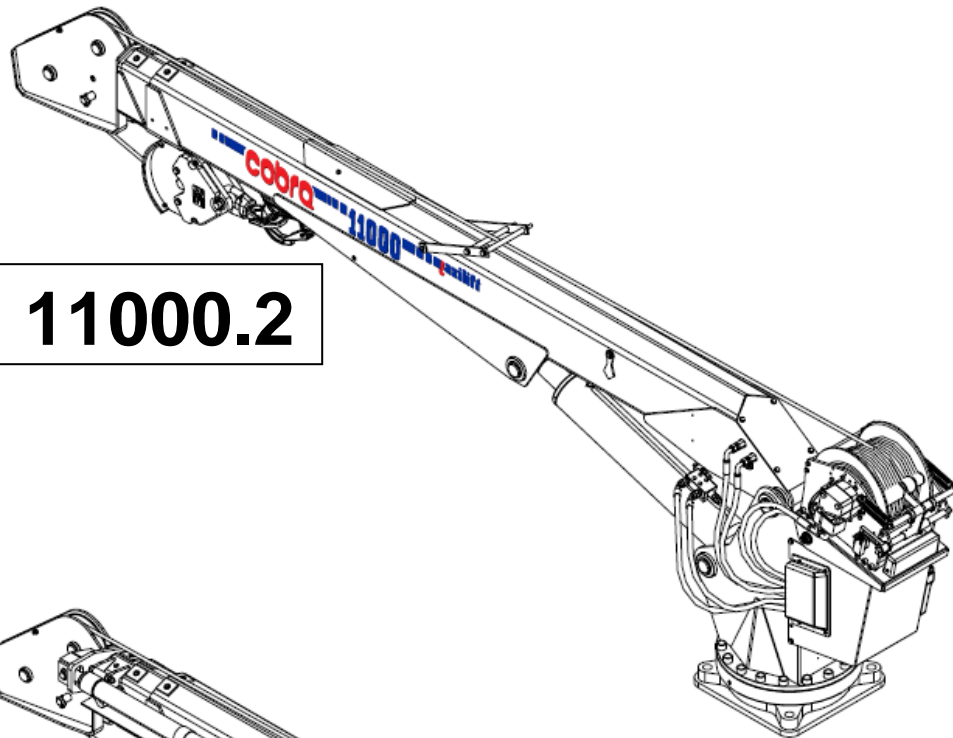
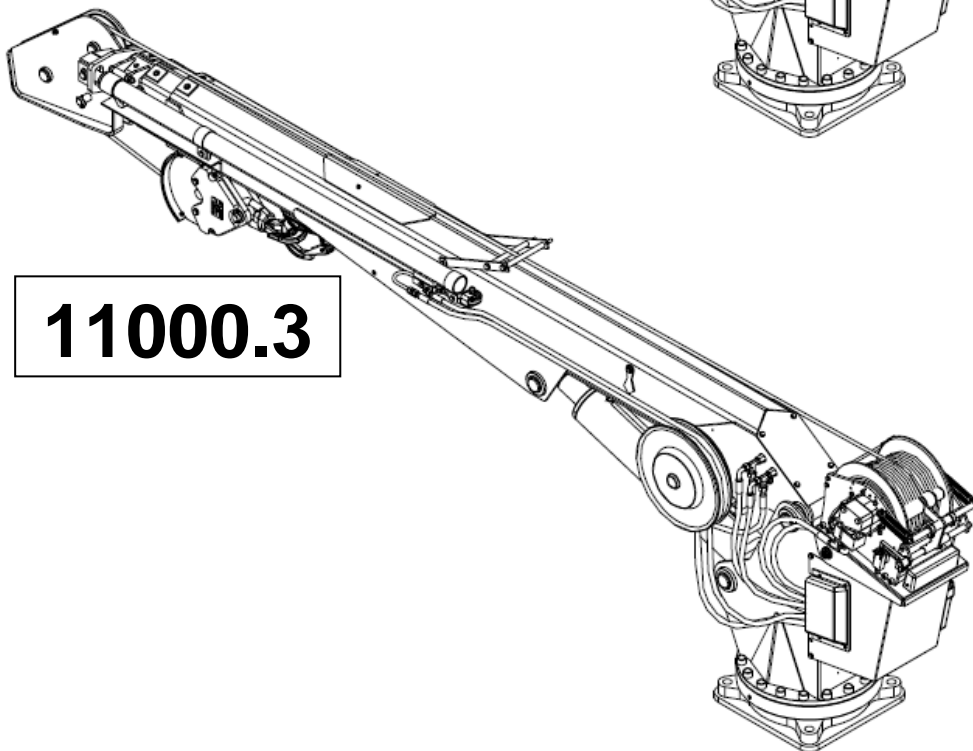


maxilift 11000 cobra



11000.2



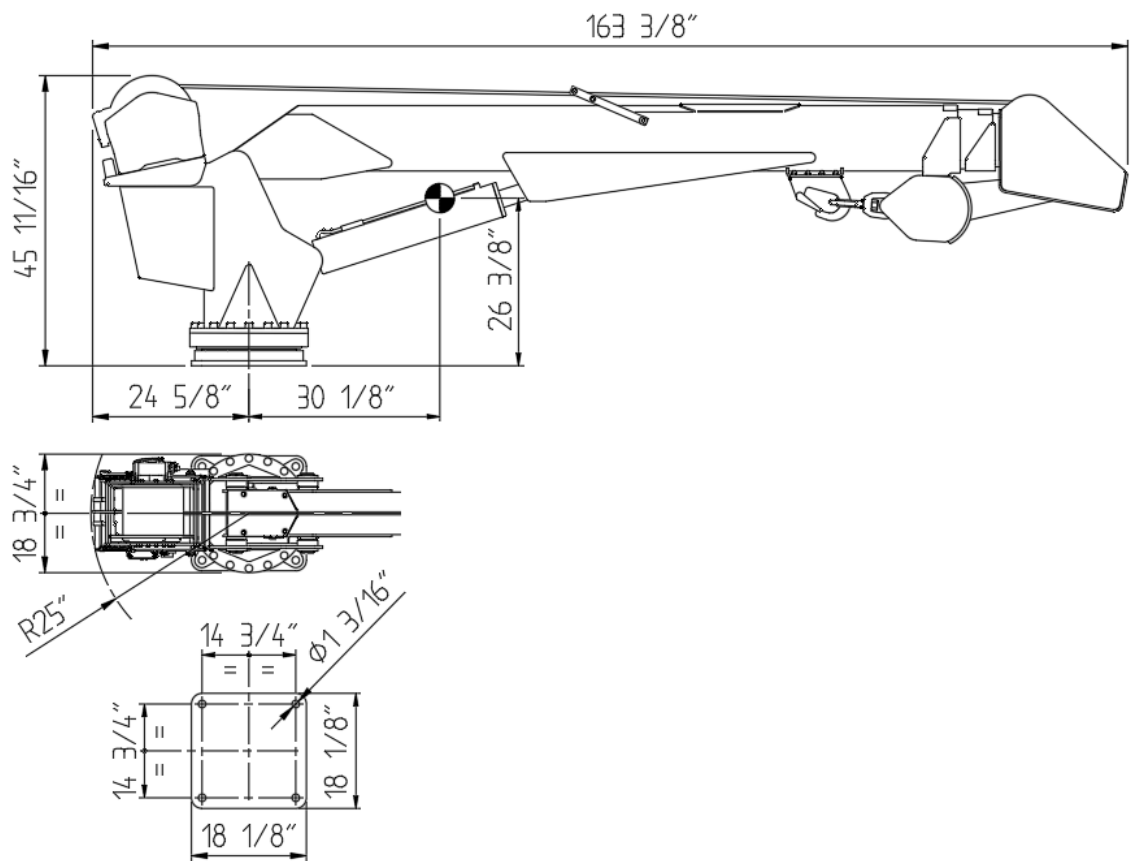
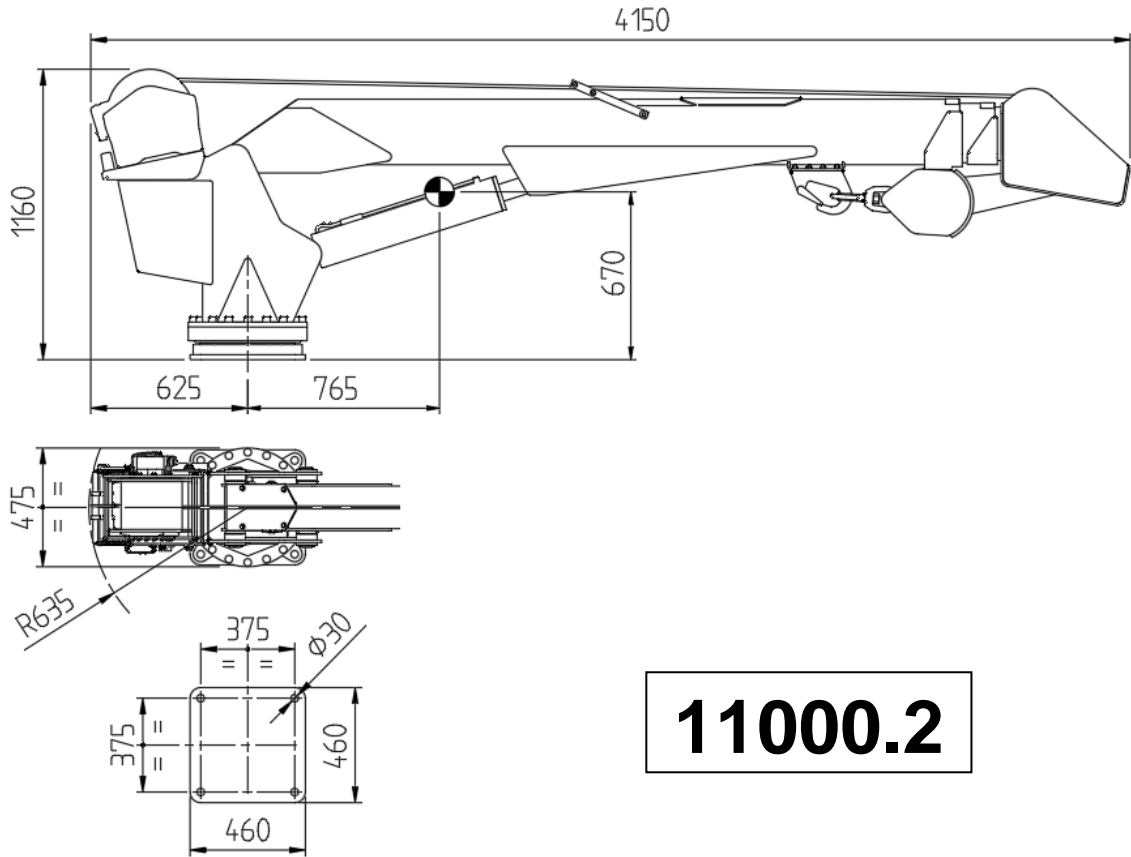
11000.3

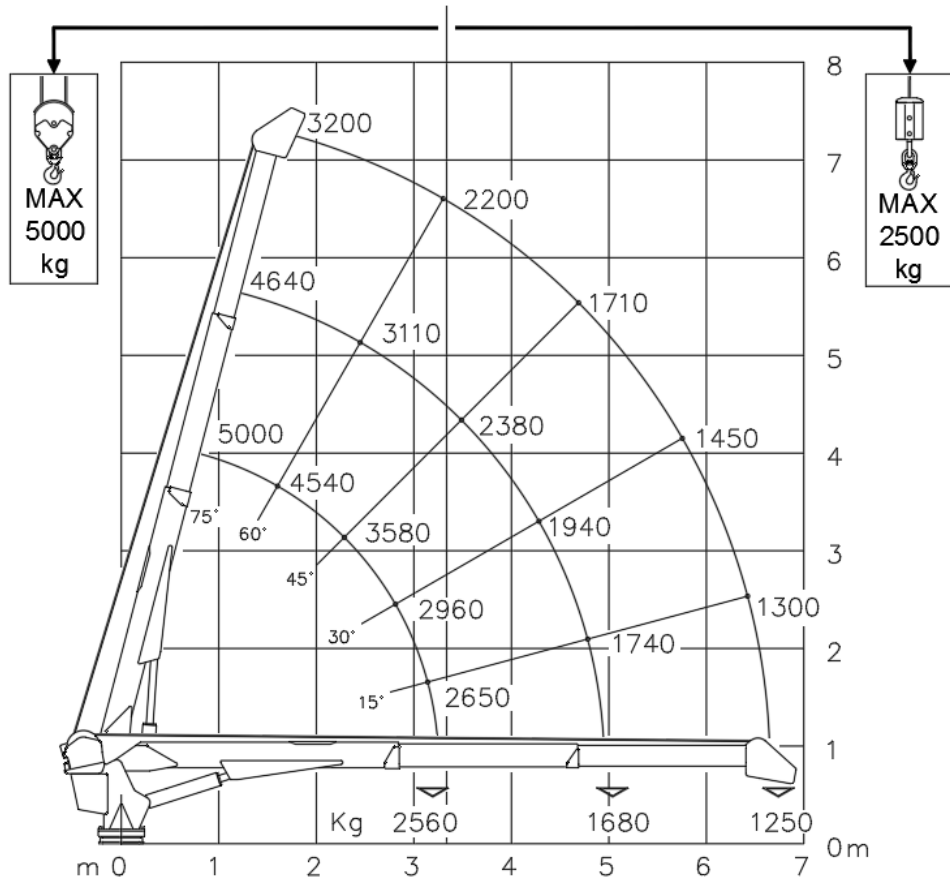
TECHNICAL SHEET

MP.0.209
Rev. 0

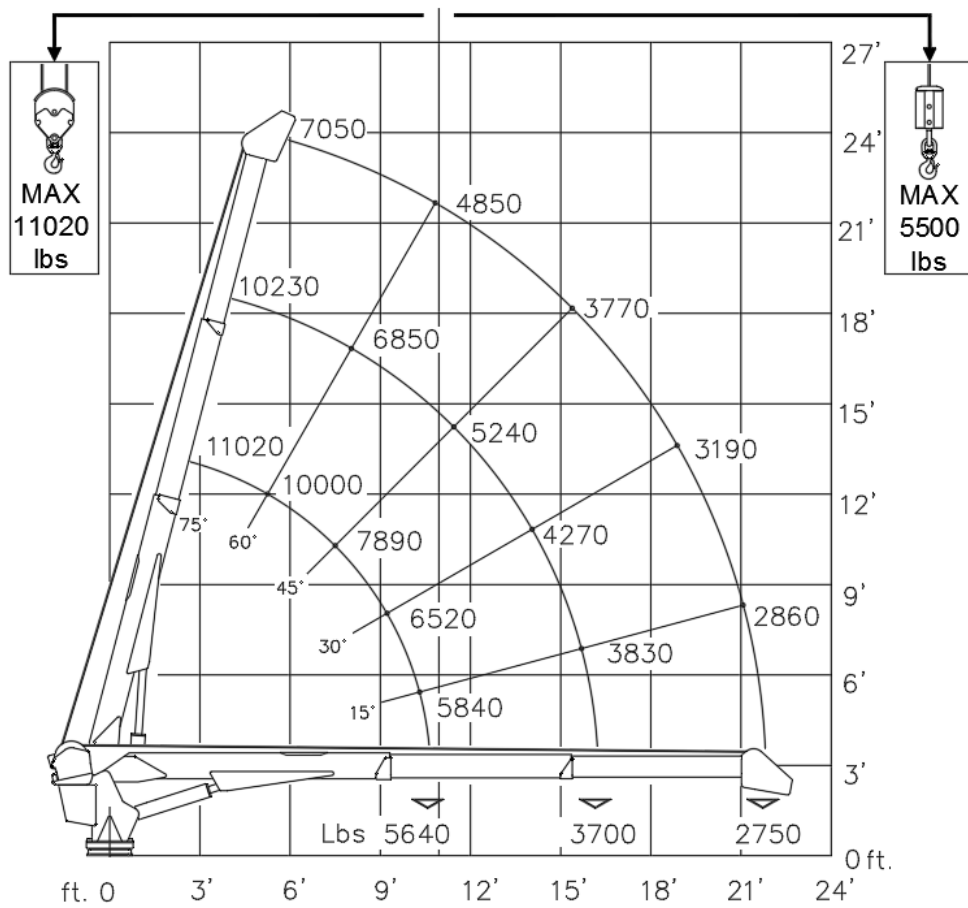


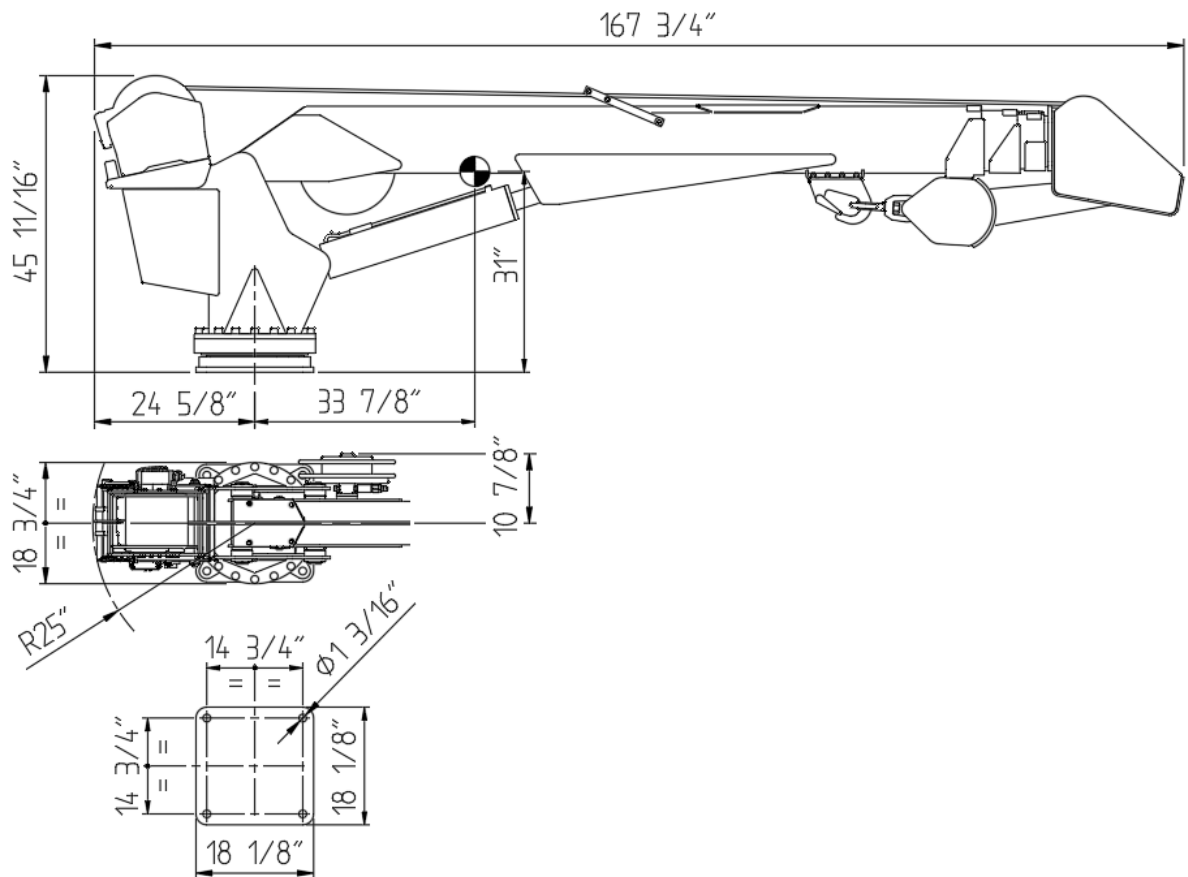
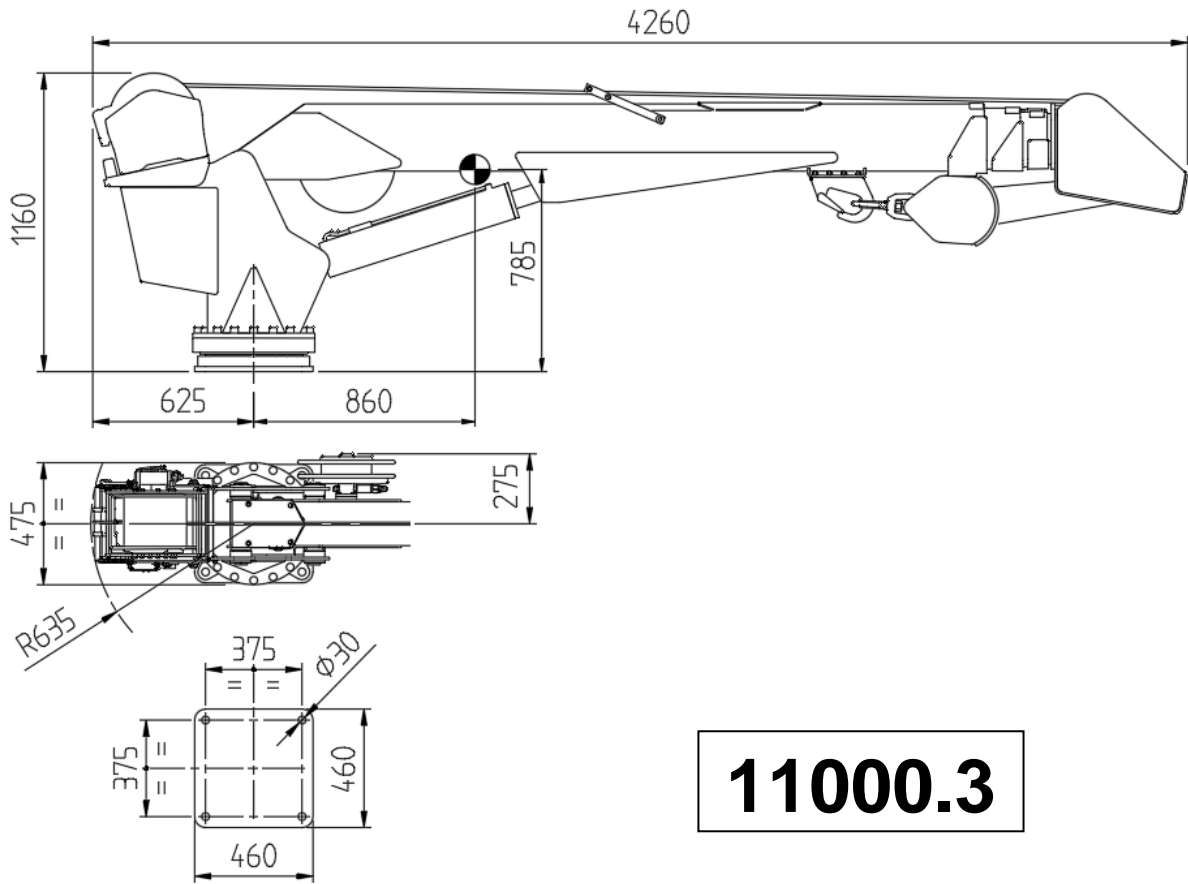
Next Hydraulics[®]
RAISE YOUR EXPECTATIONS

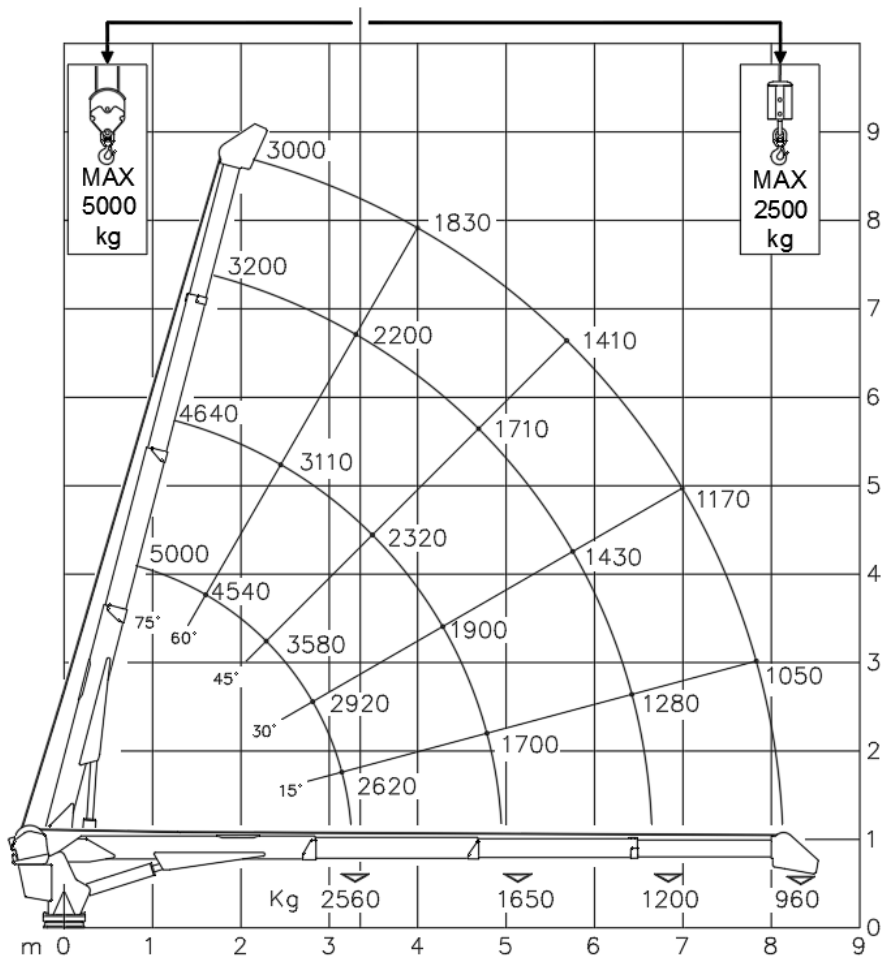




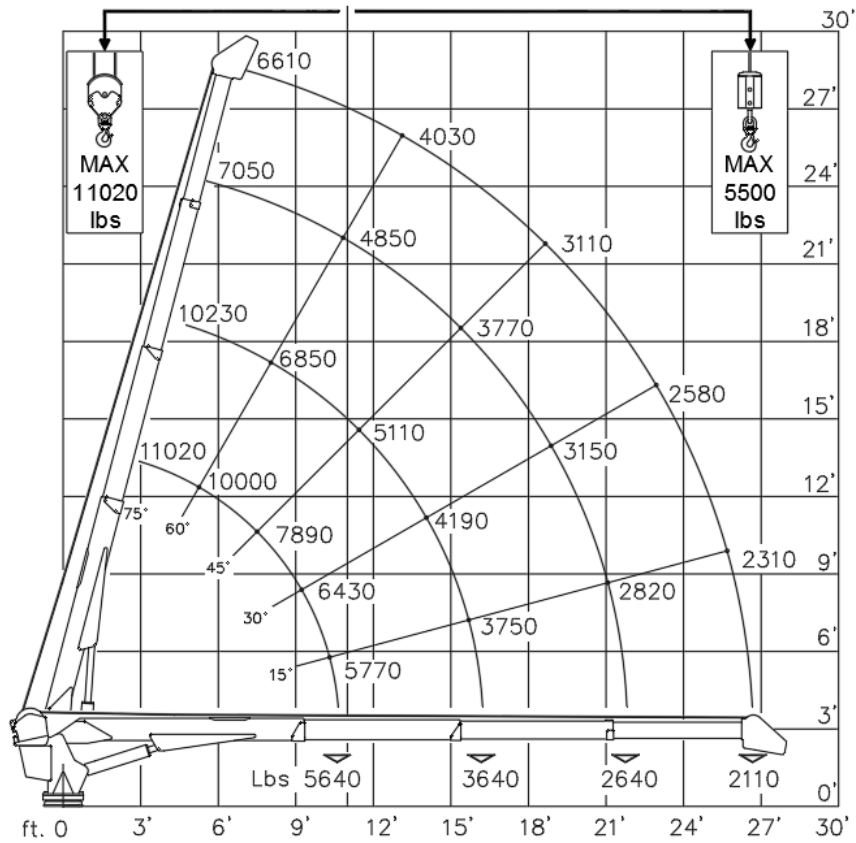
11000.2







11000.3



TECHNICAL DATA		Cobra 11000	
VERSION		11000.2	11000.3
CRANE RATING	kNm ft.lbs	83.2 61400	
EXTENSIONS TYPE		2 HYDRAULIC	3 HYDRAULIC
HYDRAULIC EXTENSION	m ft	3.4 11' 2"	4.9 16' 1"
HORIZONTAL REACH (from center line of rotation)	m ft	6.75 22'	8.35 27'
LIFTING HEIGHT FROM BASE OF CRANE	m ft	7 23'	8.5 28'
SLEWING ANGLE	°	CONTINUOUS	
SLEWING TORQUE	kNm ft.lbs	8.3 6140	
BOOM ELEVATION ANGLE	°	-10°/ +75°	
MAX. WORKING PRESSURE	bar psi	195 2830	
SUGGESTED OIL FLOW	l/min gpm	25 6.5	
CRANE WEIGHT	kg lbs	860 1900	940 2070

WINCH SPECIFICATIONS			
WINCH SINGLE LINE CAPACITY (1 ST layer)	kg lbs	2835 6250	
WINCH SINGLE LINE CAPACITY (3 RD layer)	kg lbs	2500 5500	
WINCH PULL LINE SPEED (2 ND -3 RD layer)	m/min ft/min	10 - 13 33 - 43	
WIRE ROPE DIAMETER	mm in	12 15/32"	
WIRE ROPE LENGTH	m ft	35 115'	