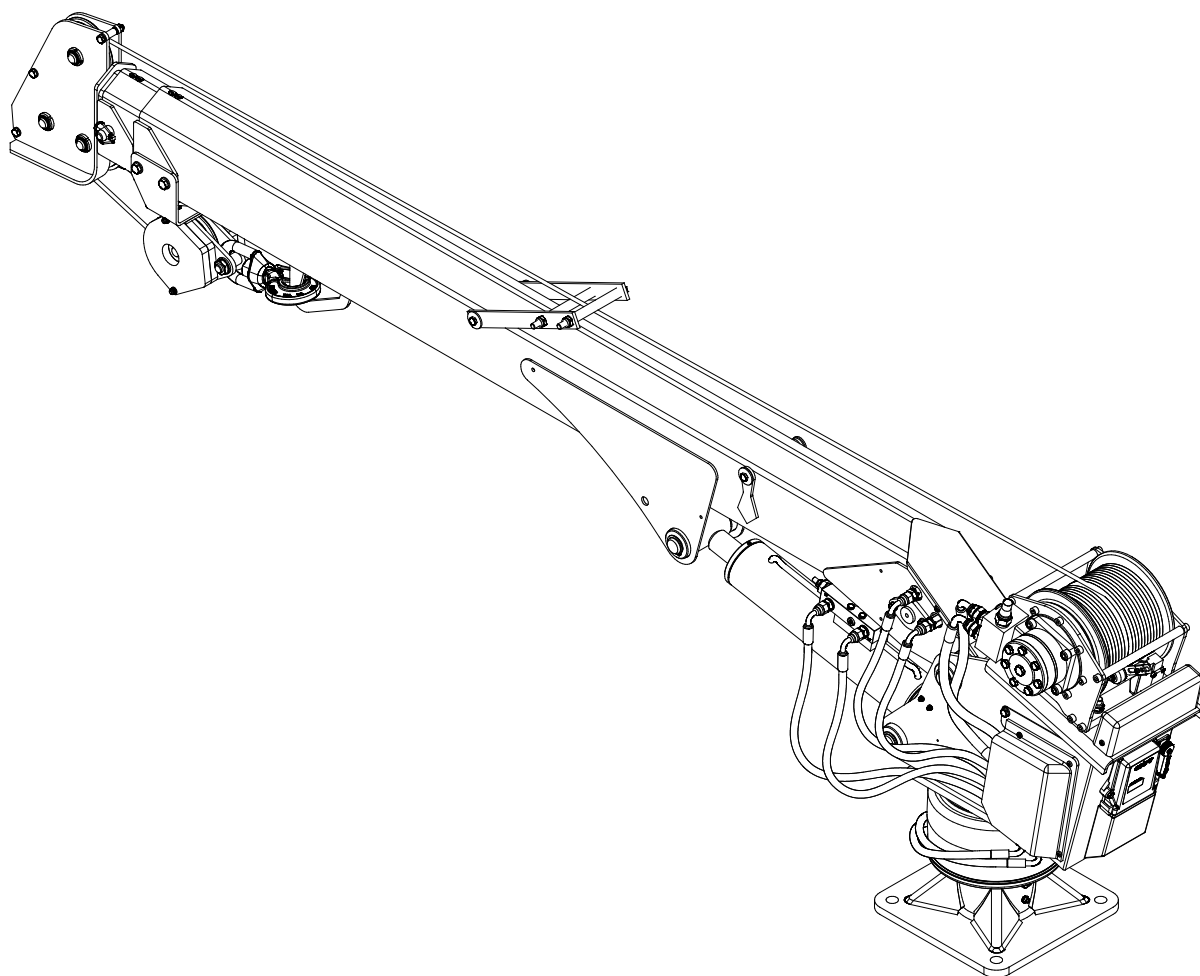


maxilift 3800 cobra

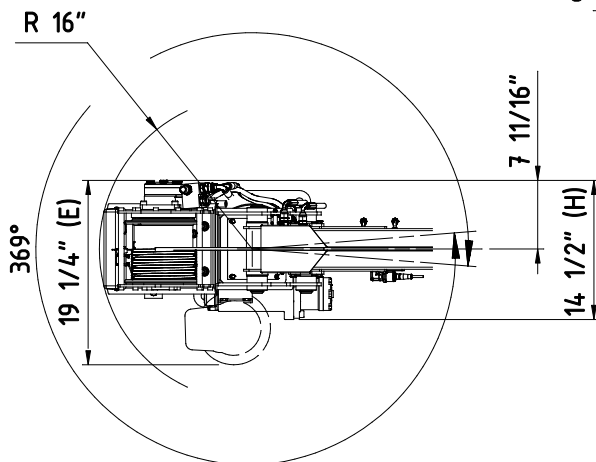
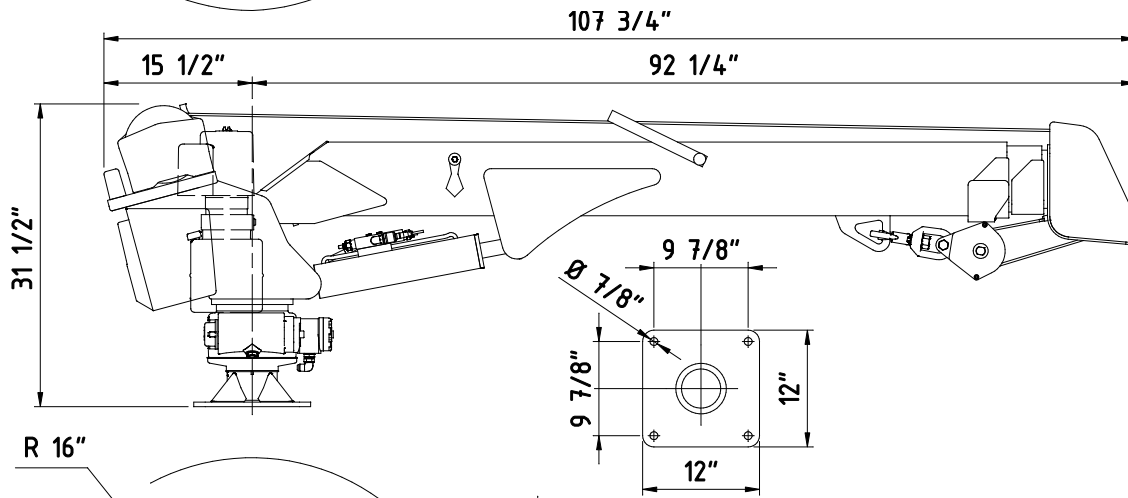
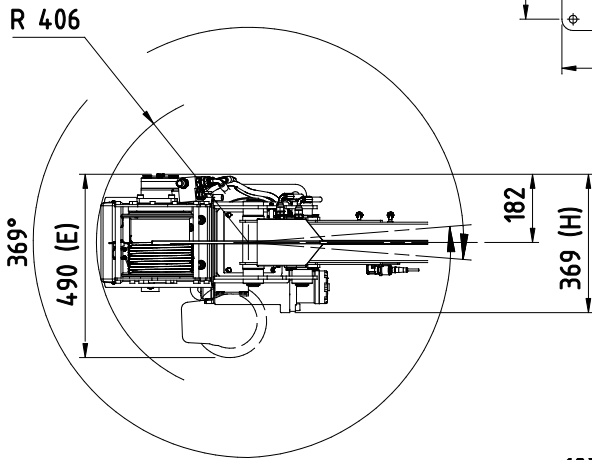
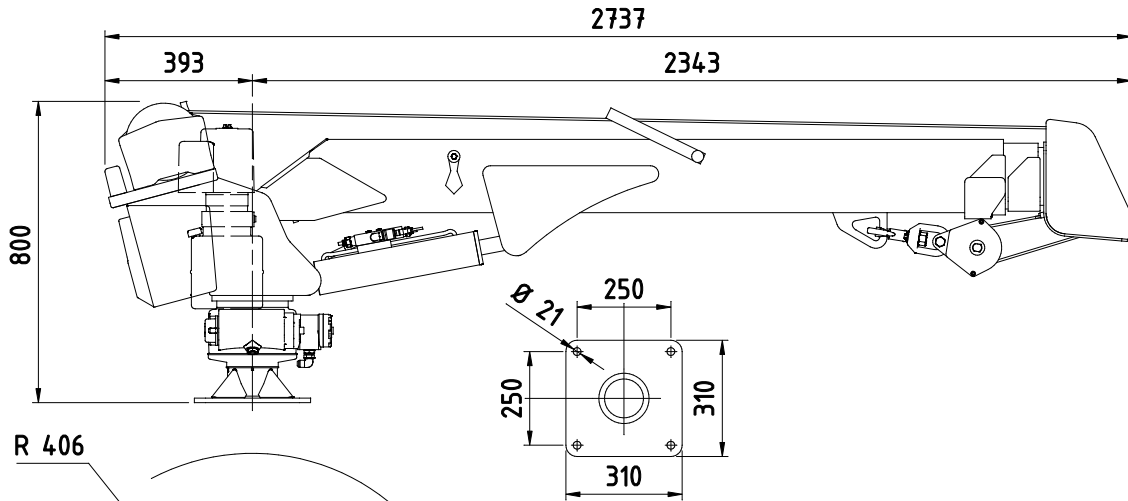


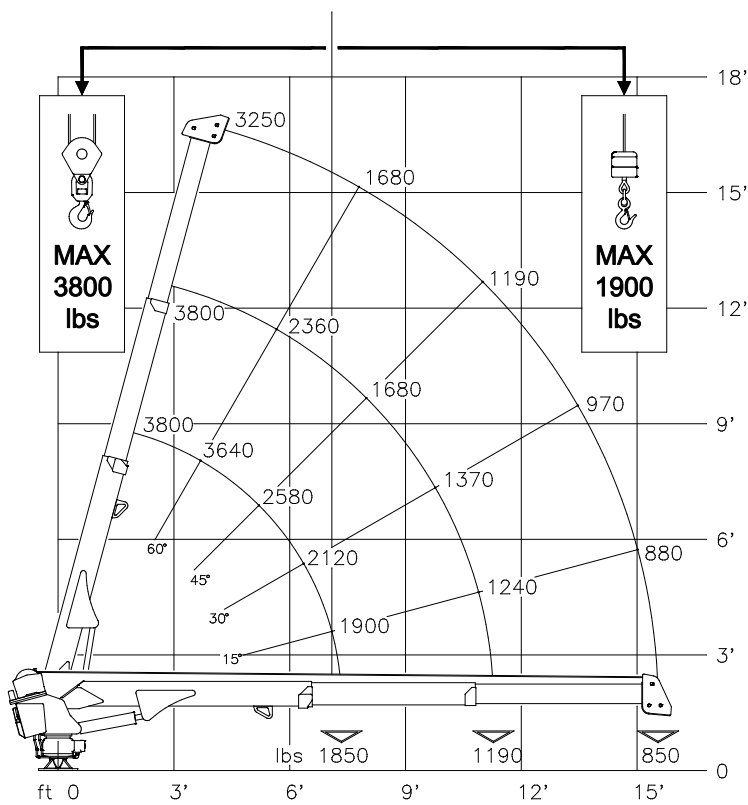
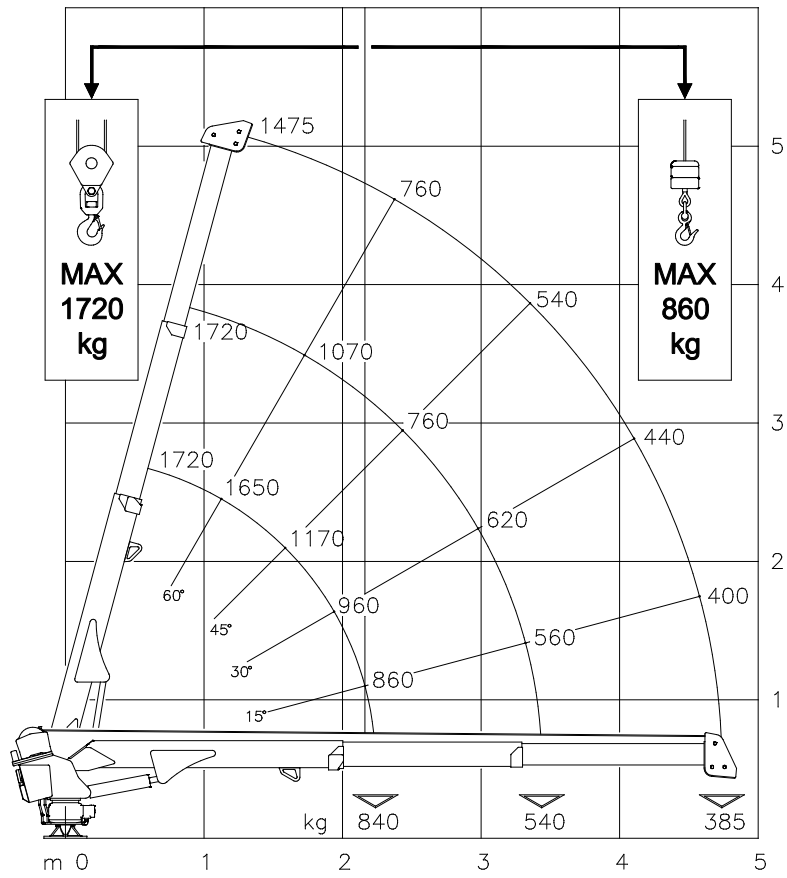
TECHNICAL SHEET

MP.0.215
Rev. 0



Next Hydraulics[®]
RAISE YOUR EXPECTATIONS





TECHNICAL DATA		Cobra 3800 (15'6" ft)	
VERSION		3800.1	3800.2
CRANE RATING	kNm ft.lbs	18,3 13500	
EXTENSIONS TYPE		1 HYDR. + 1 MANUAL	2 HYDRAULIC
HYDRAULIC EXTENSION	m ft	1,2 4'	2,5 8' 2"
MANUAL EXTENSION	m ft	1,3 4' 3"	-
HORIZONTAL REACH (from center line of rotation)	m ft	4,72 15' 6"	
LIFTING HEIGHT FROM BASE OF CRANE	m ft	5,18 17'	
SLEWING ANGLE	°	369°	
SLEWING TORQUE	kNm ft.lbs	1,8 1350	
BOOM ELEVATION ANGLE	°	-5° / +75°	
MAX. WORKING PRESSURE	bar psi	185 2680	
SUGGESTED OIL FLOW (H version)	l/min gpm	7 ÷ 10 1,85 ÷ 2,65	
OIL FLOW (E version)	l/min gpm	5 ÷ 9 1,3 ÷ 2,4	
CRANE WEIGHT (H version)	kg lbs	275 605	290 640
CRANE WEIGHT (E version)	kg lbs	295 650	310 680

WINCH SPECIFICATIONS			
WINCH SINGLE LINE CAPACITY (1 ST layer)	kg lbs	860 1900	
WINCH SINGLE LINE CAPACITY (2 ND layer)	kg lbs	790 1740	
WINCH PULL LINE SPEED (2 ND layer – H version)	m/min ft/min	8 ÷ 11,3 26,3 ÷ 37,1	
WINCH PULL LINE SPEED (2 ND layer – E version)	m/min ft/min	6,2 ÷ 10,1 20,4 ÷ 33,2	
WIRE ROPE DIAMETER	mm in	7 9/32"	
WIRE ROPE LENGTH	m ft	25 82'	