



STANDARD FEATURES

- 11,000 lb lift capacity
- 29 ft of hydraulic reach
- 4 hydraulic functions
- Hex boom with low profile jib head
- Boom-mounted planetary winch
- Wireless proportional control with digital crane load display
- Auto II Speed control

OPTIONS

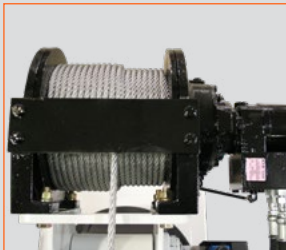
- LED boom tip light

SPECIFICATIONS

- 75,000 ft-lb crane rating
- 81,500 ft-lb max moment rating
- 26.5 ft lifting height
- 12 ft to 29 ft reach with two hydraulic boom extensions
- 60 FPM winch speed
- 7/16" x 120 ft cable
- 400° rotation with sealed turret
- 2,500 lbs operating weight
- 21" Ø mounting space required
- 44" storage height
- 162" storage length
- 25,500 lb min chassis GVW required
- 10 GPM @ 3,000 PSI open center hydraulic required
- 33 ft remote tether cord
- -6.5° boom angle



Standard wireless proportional crane and chassis control with digital crane load display.

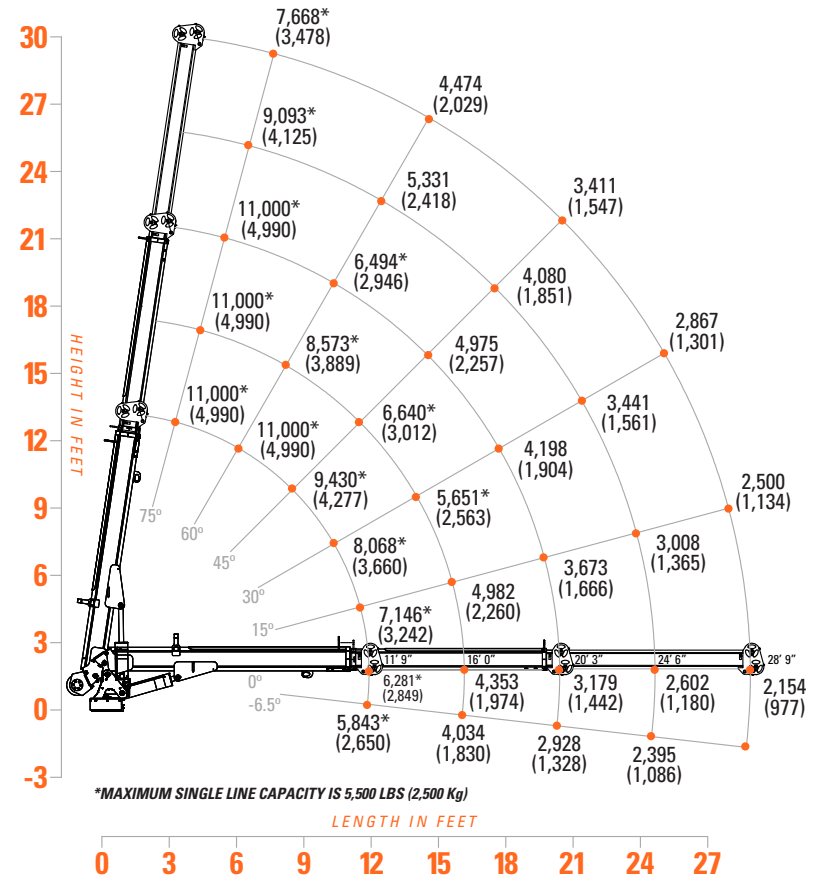


Planetary winch provides the speed and power necessary for quick lifts and stowing.



Two-stage hydraulic boom extensions provide a total of 29 ft of reach. Exclusive sequenced extension cylinders provide consistent first and second stage operation.

1069 LOAD CAPACITIES



The 1069 Tiger Crane features 29 ft of hydraulic reach and 11,000 lbs of lifting capacity, all in a crane that can be mounted on a 25.5k GVW or larger chassis.