



STANDARD FEATURES

- 3,200 lb lift capacity
- 16.5 ft of hydraulic/manual reach
- 3 hydraulic + 1 12V DC functions
- Wireless remote

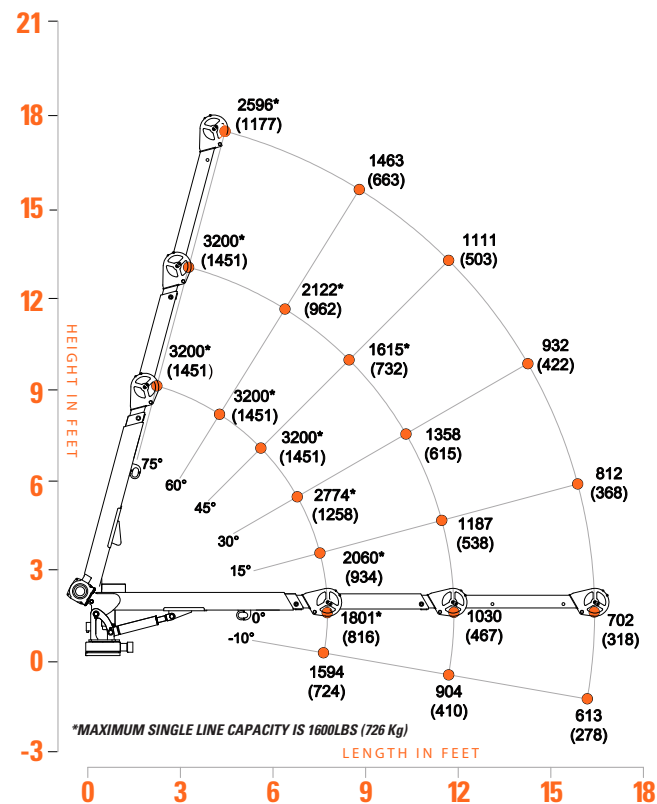
OPTIONS

- Corded remote
- Remote charging pad
- LED boom tip light

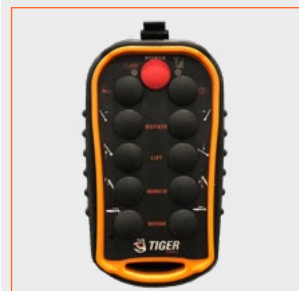
SPECIFICATIONS

- 12,500 ft-lb crane rating
- 13,800 ft-lb max moment rating
- 15 ft lifting height
- 7.8' to 11.8' hydraulic extension, 11.8' to 16.5' manual extension
- 22 FPM winch speed
- 1/4" x 80 ft cable
- 400° rotation with sealed turret
- 750 lbs operating weight
- 14" Ø mounting space required
- 32" storage height
- 108" storage length
- 11k min chassis GVW required
- -10° degree boom angle

3216E LOAD CAPACITIES



The 3216E Tiger Crane features include 3,200 lbs of capacity, standard wireless remote with horn, anti-two-block, four power functions plus manual jib, independent 12 V DC winch and hydraulic motors for increased duty cycle, and sealed turret. The 3216E has a compact storage size making it an ideal choice for 9 ft bodies and its light operating weight offers more payload.



Standard wireless remote provides additional functionality and freedom of operator movement.



Optional remote with 25' tethered cord (no wireless functionality).



Hydraulic and manual boom extension with standard A2B.