



STANDARD FEATURES

- 4,000 lb lift capacity
- 16.5 ft of manual
- 3 hydraulic + 1 12V DC functions
- Wireless remote

OPTIONS

- Corded remote
- Remote charging pad
- LED boom tip light

SPECIFICATIONS

- 18,500 ft-lb crane rating
- 20,300 ft-lb max moment rating
- 15 ft lifting height
- 7.8' to 11.8' hydraulic extension, 11.8' to 16.5' manual extension
- 22 FPM winch speed
- 1/4" x 80 ft cable
- 400° rotation with sealed turret
- 750 lbs operating weight
- 14" Ø mounting space required
- 32" storage height
- 108" storage length
- 11k min chassis GVW required
- -10° boom angle



Standard wireless remote provides additional functionality and freedom of operator movement.

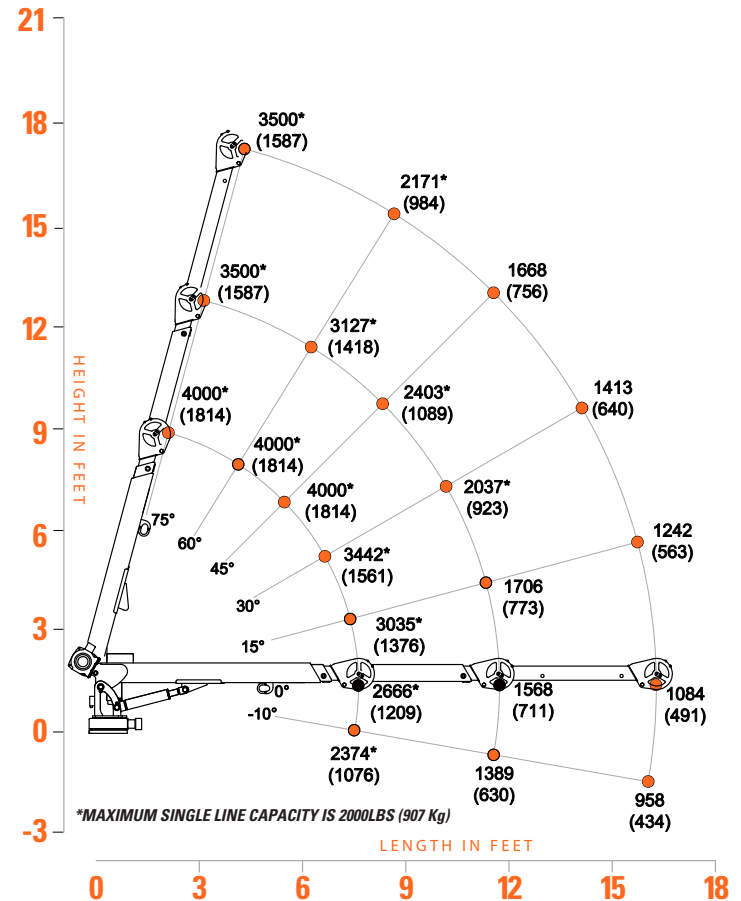


Optional remote with 25' tethered cord (no wireless functionality).



Optional wireless charging pad.

4016E LOAD CAPACITIES



The 4016E Tiger Crane offers class-leading capacity and strength in a compact package. Features include 4,000 lbs of lifting capacity, standard wireless remote with horn, anti-two-block, four power functions plus manual jib, independent 12 V DC winch and hydraulic motors for increased duty cycle, and sealed turret. The 4016E has a compact storage size making it an ideal choice for 9 ft bodies, and its light operating weight offers more payload.