



STANDARD FEATURES

- 6,500 lb lift capacity
- 21 ft of hydraulic reach
- 4 hydraulic functions
- Hex boom with low profile jib head
- Boom-mounted planetary winch
- Wireless proportional control with digital crane load display
- Auto II Speed control

OPTIONS

- LED boom tip light

SPECIFICATIONS

- 40,000 ft-lb crane rating
- 43,200 ft-lb max moment rating
- 18.5 ft lifting height
- 12 ft to 21 ft reach with one hydraulic boom extension
- 70 FPM winch speed
- 3/8" x 120 ft cable
- 400° rotation with sealed turret
- 1450 lbs operating weight
- 18" Ø mounting space required
- 37" storage height
- 159" storage length
- 14,500 lb min chassis GVW required
- 8 GPM @ 2875 PSI – open center hydraulic required
- 33 ft remote tether cord
- -15° boom angle



Standard wireless proportional crane and chassis control with digital crane load display.

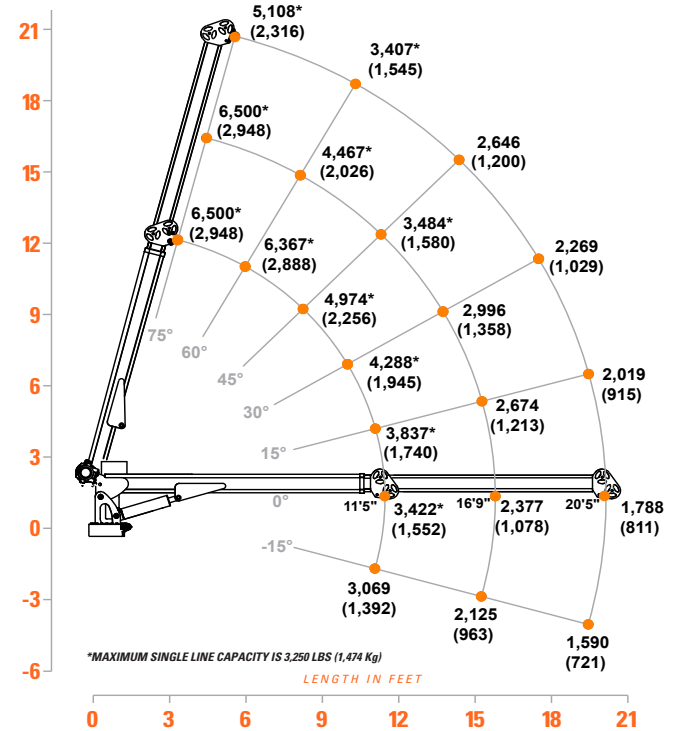


Auto II Speed automatically reduces the maximum working speed of all crane functions when a load is sensed.



Boom tip light option adds work area lighting directly below hook. Dual LED lights with side-to-side adjustment.

6542 LOAD CAPACITIES



The 6542 is the most popular Tiger Crane model. Boasting a very strong 40,000 ft-lb rating and 6,500 lbs lift capacity, the 6542 is the crane for your medium duty service truck.