



STANDARD FEATURES

- 7,500 lb lift capacity
- 30.5 ft of hydraulic reach
- 4 hydraulic functions
- Hex boom with low profile jib head
- Boom-mounted planetary winch
- Wireless proportional remote with digital crane load display
- Auto II Speed control

OPTIONS

- LED boom tip light

SPECIFICATIONS

- 47,000 ft-lb crane rating
- 52,300 ft-lb max moment rating
- 29 ft lifting height
- 12 ft to 30.5 ft hydraulic boom extension
- 68 FPM winch speed
- 3/8" x 120 ft cable
- 400° rotation with sealed turret
- 1850 lbs operating weight
- 18" Ø mounting space required
- 41.7" storage height
- 170" storage length
- 19,500 lb min chassis GVW required
- 8 GPM @ 2750 PSI – open center
- 33 ft remote tether cord
- -13° boom angle



Standard wireless proportional crane and chassis control with digital crane load display.

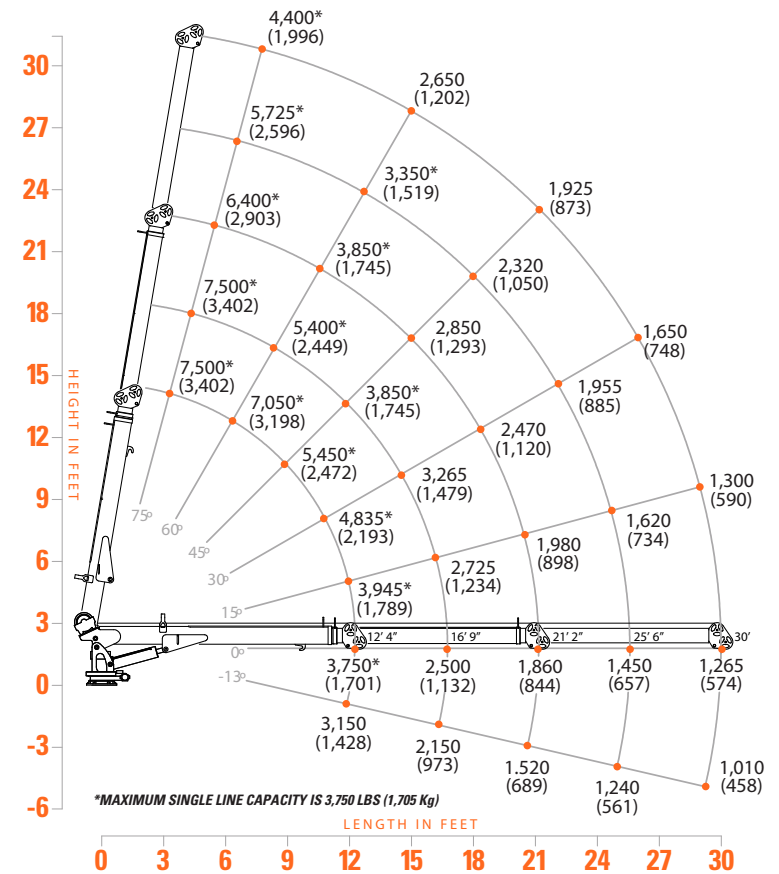


Exclusive sequenced two-stage hydraulic boom extensions provide a total of 30.5 ft of reach.



Fixed Rotation - The 7543 features a fixed base that allows it to work well with deck covers without the need for a riser.

7543 LOAD CAPACITIES



The 7543 Tiger Crane is specifically designed for 19.5 GVW applications requiring 30.5 ft of horizontal reach. Possessing 7,500 lbs of lifting capacity and all the innovations included in the Tiger Crane family makes this model a leader in the medium duty truck markets.