



STANDARD FEATURES

- 8,600 lb lift capacity at 5.8 ft
- 29 ft of hydraulic reach
- 4 hydraulic functions
- Hex boom with low profile jib head
- Boom-mounted planetary winch
- Wireless proportional control with digital crane load display
- Auto II Speed control

OPTIONS

- LED boom tip light

SPECIFICATIONS

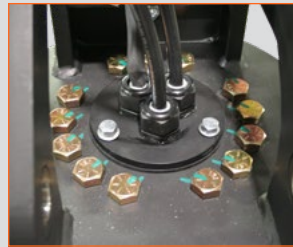
- 60,000 ft-lb crane rating
- 68,300 ft-lb max moment rating
- 27 ft lifting height
- 12 ft to 29 ft reach with two hydraulic boom extensions
- 56 FPM winch speed
- 3/8" x 120 ft cable
- 400° rotation with sealed turret
- 2,500 lbs operating weight
- 18" Ø mounting space required
- 41" storage height
- 162" storage length
- 25,000 lb min chassis GVW required
- 8 GPM @ 2,950 PSI open center hydraulic required
- 33 ft remote tether cord
- -8° boom angle



Standard wireless proportional crane and chassis control with digital crane load display.

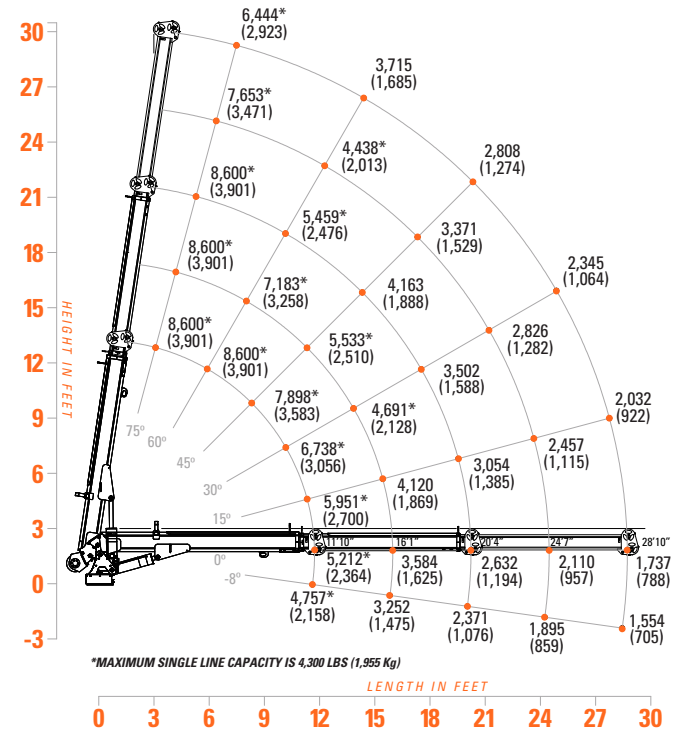


Exclusive sequenced two-stage hydraulic boom extensions provide a total of 29 ft of reach.



Sealed center rotation eliminates the need for a drip pan in the crane tower.

8059 LOAD CAPACITIES



The 8059 is perfect fit for those who need a long reach crane on a 26k GVW chassis. Featuring 8,600 lbs of lifting capacity, 29 ft of reach, and a wireless remote with digital crane load display, the 8059 will allow you to work confidently in long reach applications.